




easy | 19 14


easy vending
easy picking

-  dispensing at 90 cm
-  22" Monitor
-  9/14 lanes modular shelves
-  payments system setup
-  break-proof glass
-  internal LED lighting
-  automatic opening
-  internal elevator




EASY 14
W - 1841
H - 1989
D - 985




EASY 9
W - 1421
H - 1992
D - 883

SPACIOUS AND CONVENIENT PICKUP AREA

The pickup compartment of the Easy line is positioned at a height of 90 cm from the ground. Additionally, the pickup window opens and closes automatically.

CONVEYOR LIFT

Our internal elevator is designed to dispense products with extreme delicacy. A conveyor belt inside the elevator gently moves the products.

22" TOUCH SCREEN

Thanks to the 22" touch screen, customers can visualize and choose products directly from the screen, with the ability to read product descriptions and ingredients.

For each product, there is also the option to add up to 4 photos and a video.

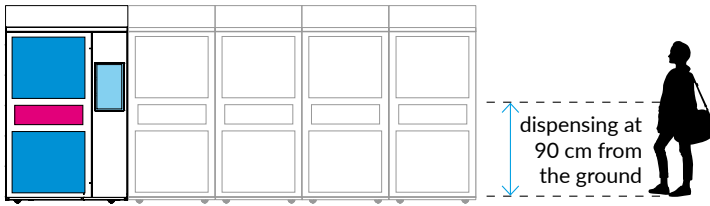
SATELLITE MODULE

The Satellite Module is controlled by the main vending machine, called Master. The Satellite Module is a fully-fledged Magex machine but without the control console with a touchscreen.

An entire room can be transformed into an automated store by combining Master vending machines and their Satellite Modules.

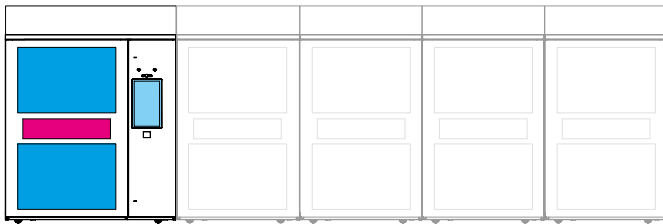
EASY 9

satellite module (max. 4)



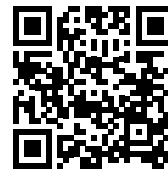
EASY 14

satellite modules (max. 4)



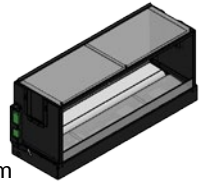
■ showcase products ■ touch screen ■ withdrawal area

EASY	9	14
width	1324 mm	1841 mm
height (with cooling system)	1977 mm	1989 mm (2289 mm)
depth	981 mm	985 mm
withdrawal area	732 x 210 mm	937 x 210 mm
maximum number of floors	8	8
lanes per floor	9	14
voltage supply	220V	230V/50Hz 110V/60Hz
consumption	600W	660W
weight	450 Kg	730 Kg

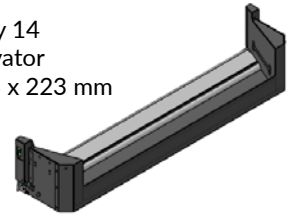


video

easy 9
elevator
756 x 270 mm



easy 14
elevator
938 x 223 mm



TECHNICAL FEATURES

- Reinforced pickup compartment
- Gas-filled thermic anti-vandalism glass
- Console with independent opening
- 22" HD monitor
- Quad-core industrial computer
- Operating system installed on 32GB SSD
- LED lighting
- Configurable shelves in height, depth, and number of selections
- Armoured console locks
- Self-diagnostic fault finding system
- Standard multi-control electronics
- Data management and statistics display system
- Temperature control with recording

OPTIONAL

- Banknote reader
- Banknote reader with change giver
- Coin reader with tube change giver
- Coin reader with multihopper change giver
- Outdoor cover
- GSM data management
- Fridge unit
- Variable weight management system
- Item insertion via barcode
- Credit card/debit card reader
- Graphic customization
- RFID loyalty card system
- Age verification reader
- Lexan protective door

